



MV INW-4 (FIFI-1, AHT)

PRINCIPLE PARTICULARS		CAPACITY	
BUILT	Dec., 2009	Deck Strength	5 Tons/m ²
G.R.T	873 T	Clear Deck Area	215 m ²
N.T	262T	Fuel Oil	523 m ³
Class	ABS	Fresh Water	246 m ³
Notation	A1 Towing Vessel, Fire Fighting Vessel Class 1, Offshore Support Vessel AH, AMS, H, AMS	Chiller	8 m ³
IMO NO.	9516851	Freezer	8 m ³
Call Sign	I19CJ	DISCHARGE RATE	
Flag	PANAMA	Fuel Oil	70 m ³ /hr at 70 m head
		Fresh Water	70 m ³ /hr at 70 m head
DIMENSIONS		TOWING/ ANCHOR HANDLING EQUIPMENT	
Length Overall	48.00 m	Bollard Pull	61.88 T
Length B.P	42.5 m	Towing / Anchor Handling	1 X 120 Tons Line Pull, Brake hold 200 Tons.
Breadth Moulded	13.20 m	Towing Winch	Hydraulic, Doubledrum, Waterfall arrangement.
Depth Moulded	4.80 m	Upper Drum Capacity	52mm dia. X 1000 m
Draft Moulded	3.80 m	Lower Drum Capacity	50 mm dia. X 500 m
		Drum Capacity	52 mm dia. X 1000 m
MACHINERY		DECK & AUXILIARY EQUIPMENT	
Main Engines	2 X 2375 BHP / Caterpillar 3516B-HD	Capstans	2 X S.W.L 5 Tons/each
Auxiliary Engines	3 X 245 kw / Caterpillar 3046 C	Tugger Winch	1 X S.W.L 5 Tons
Emergency Genset	1 X 56 KW Perkins	Roller	5mX1.6m dia(S.W.L 200 Tons)
Bow Thruster	1 X 400 BHP Electrical motor driven thrust	Anchor Windlass	1 X 5 Tons at 12 m/min
Propellers	2X Fixed Pitch Propeller.	Shark Jaw	1 X S.W.L 200 Tons
Rudders	Conventional	Tow Pins	2X S.W.L 200 Tons
Anchors	2X Stockless anchors with 22 lengths, 34 mm dia. Stud link chain	Deck Crane	3Tons (S.W.L)
Maximum Speed	12.50 Knots		
			FRC (6 persons) with Davit.

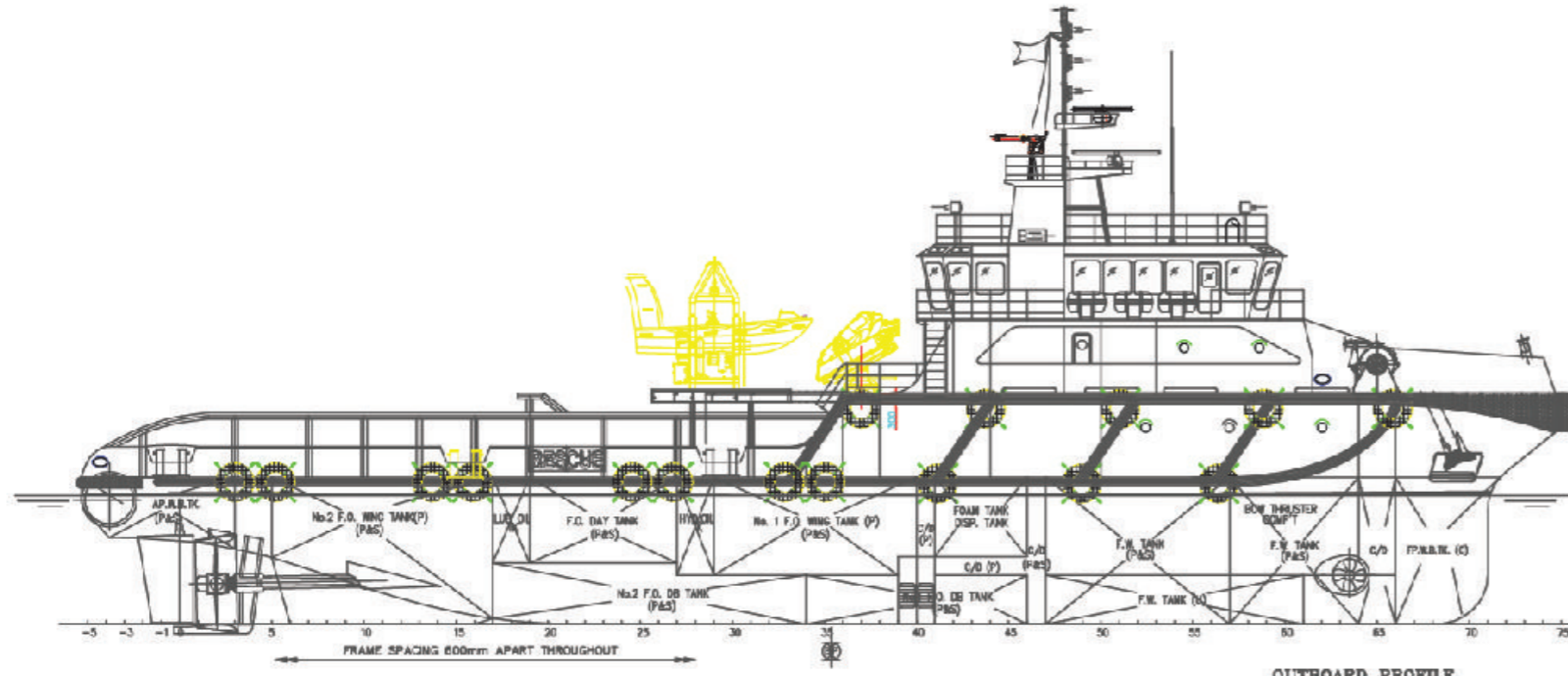
ACCOMMODATION	
2 x 1 Man	2 men
2 x 2 Men	2 men
6 x 4 Men	24 men
Total	30 men

RADIO & NAVIGATION EQUIPMENT	
SSB	1 X Furuno
VHF	3 X MCMURDO R1
Radar	2 X Furuno
Echo Sounder	1 X Furuno
Gyro Compass	1 X GM NAV 2001
GMDSS	Furuno, A1, A2, A3
Magnetic Compass	1 X SAURU
Speed Log	1 X Furuno
Auto Pilot	1 X Furuno
Navtex Receiver	1 X JTC
DGPS Navigation	1 X Furuno
AIS	1 X Furuno
EPIRB / SART	1 X MCMURDO F3
Joy Stick Control	2 X Palmarine
Weather Faximile	1 X Furuno
ECDIS	MDP -A2
SVDR	MDP -A5
Fixed H2S @ Gas Delection	

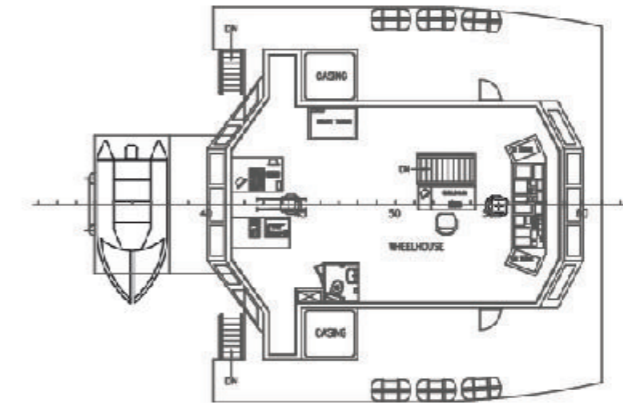
FIRE FIGHTING EQUIPMENT	
External	
Fire Pump	2 X 2800 m ³ /hr at 11 bars
Fire Monitors	2 water monitors (One with double barrel for foam discharge)
Fire Water Spraying	All round water curtain 35 m ³ /hr.
Internal	
Co₂ system for E/R	Fixed central bank.
GS & Fire Pump	1 x 50 m ³ /hr at 33 m head.
Emergency Fire Pump	1 X 25 m ³ /hr at 30 m head.



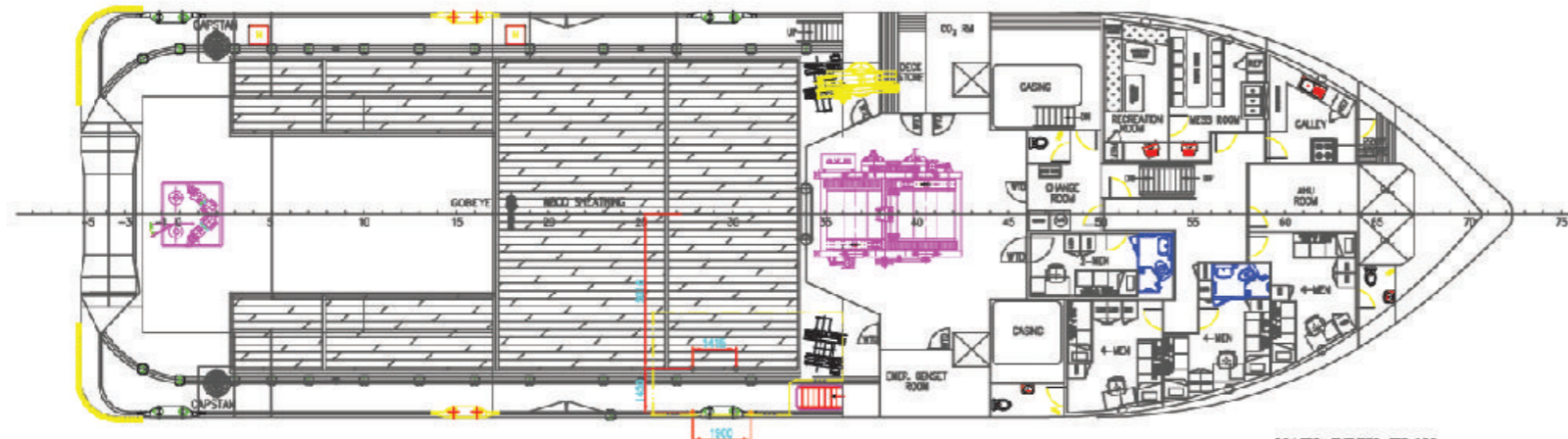
GA Plan M/V "INW 4"



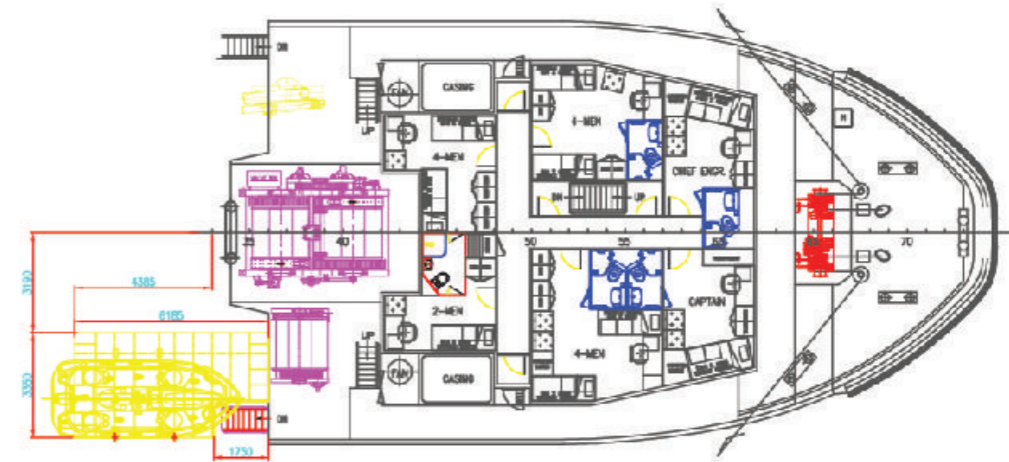
OUTBOARD PROFILE



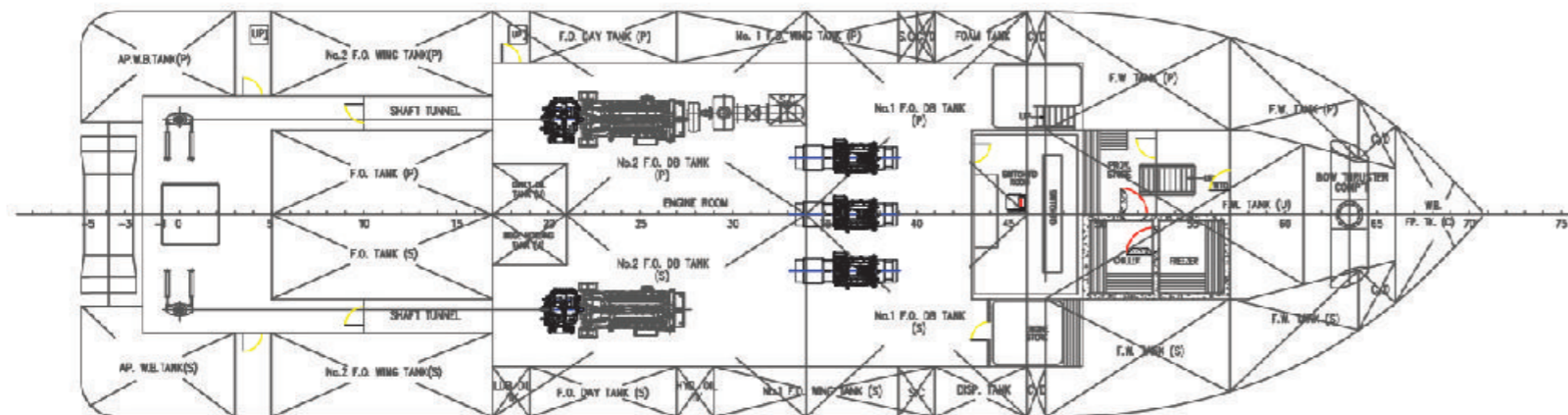
BRIDGE DECK PLAN



MAIN DECK PLAN



FORECASTLE DECK



BELOW MAIN DECK PLAN

PRINCIPAL DIMENSIONS

LENGTH OVERALL	48.00 M
LENGTH WATERLINE	45.56 M
LENGTH BET. PERP.	42.40 M
BREADTH MOULDED	13.20 M
DEPTH MOULDED	4.80 M
DESIGN DRAFT MOULDED	4.20 M

VESSEL NAME	M.V. INW-4
OWNER	INTERNATIONAL NAVAL WORKS
TYPE	GENERAL ARRANGEMENT PLAN
SCALE	1:100

